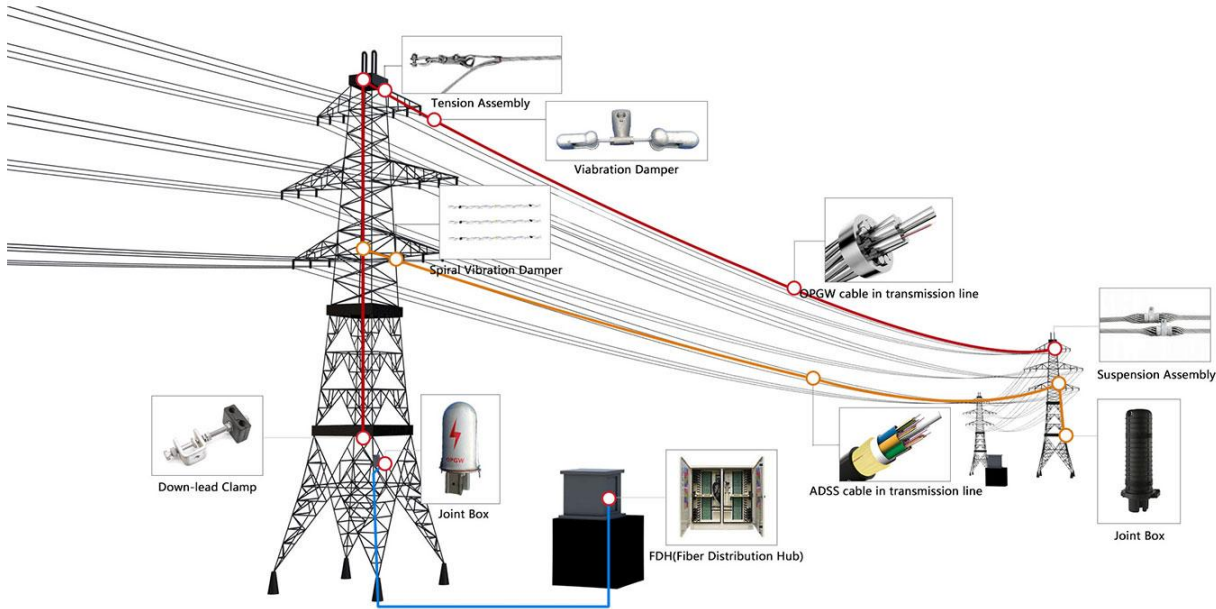


### Overview

Down Lead Clamp is used for fixation of OPGW and ADSS onto the pole/tower. It is suitable for all kinds of cable diameter; the installation is reliable, convenient and fast.

Down Lead Clamp is divided into two basic types: pole used and tower used. Each basic type is divided into electro-insulating rubber and metal type. Electro-insulating rubber type Down Lead Clamp is generally used for ADSS installation, while metal type Down Lead Clamp is generally used for OPGW installation.



### Parameter

Item	Type	Available Dia.of Cable(mm)	Note
Rubber type Down lead clamp for tower	ATY 1440	9.0-14.4	for ADSS cable
	ATY 1770	14.5-18.5	
Metal type Down lead clamp for tower	OTY 240A	8.5-24.0	for OPGW
Rubber type Down lead clamp for pole	AGY 1440-***	9.0-14.4	for ADSS cable
	AGY1770-***	14.5-18.5	
Metal type Down lead clamp for pole	OGY 240-***	8.5-24.0	for OPGW